



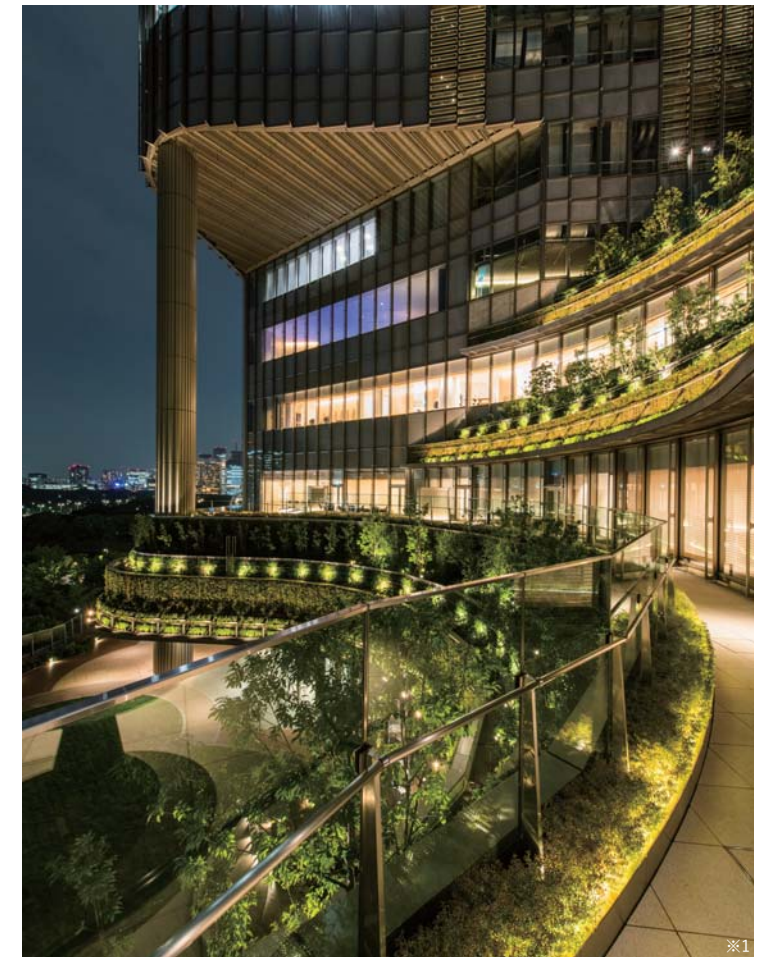
Hibiya Step Square The center of liveliness integrated with a grand stairway that connects the greenery of Hibiya-Nakadori St. and Hibiya Park.



9F Sky Garden A “third place” for office workers for relaxation and refreshment.



6F Park View Garden Lawn garden and viewing terrace designed with events in mind.



Park View Garden at Night Illuminated by ground spotlights and linear lighting

KEYWORD OF LANDSCAPE DESIGN

ENHANCING THE VALUE OF THE AREA

Hibiya, a town of cinemas and performing arts, has become home to a commercial and business complex with stores on lower levels and offices on upper floors. Derived from the concept of “Dancing Tower,” the elegant façade is surrounded by open-air space graced with curved patterns and a meandering path leading to Hibiya Park to provide pleasant accessibility and unique experience for pedestrians. The lush greenery on the ground coupled with a hanging garden at over 31m high, is creating a new landscape in Hibiya and multi-tiered flow of people from ground to high-rise.



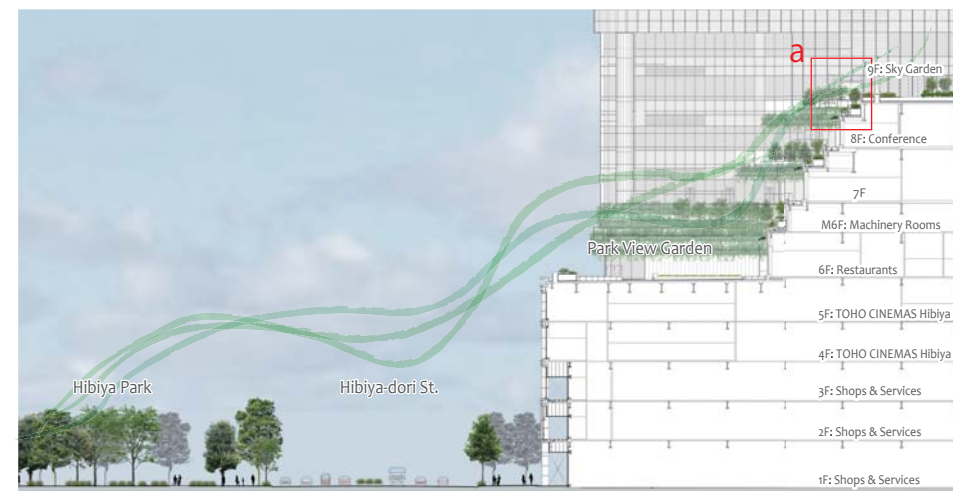
Location map

TOKYO MIDTOWN HIBIYA

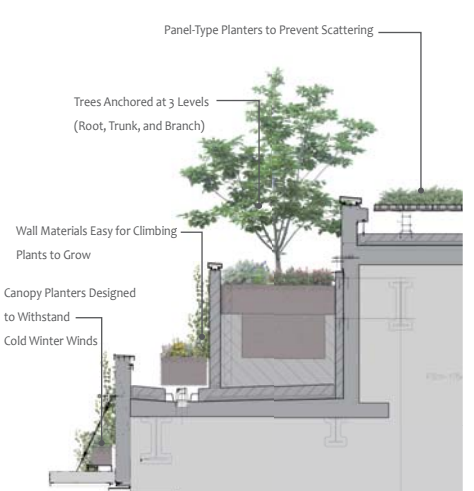
Address : 1-1-2 Yurakucho, Chiyoda-ku, Tokyo
 Developer : Mitsui Fudosan Co., Ltd.
 Master Design Architect : Hopkins Architects
 Urban Planning, Preliminary Design, Design Supervision : Nikken Sekkei Ltd.
 Detail Design, Supervision : Kajima Design
 Landscape Detail Design, Supervision Support : Landscape Design Inc.
 Construction : Kajima Corporation
 Site Area : 10,702.32m² (Tower) + 1,990.01 m² (Square & Related Facilities)
 Construction Period : Jan. 2015 – Feb. 2018



Exterior of Hibiya Mitsui Tower, Tokyo Midtown Hibiya



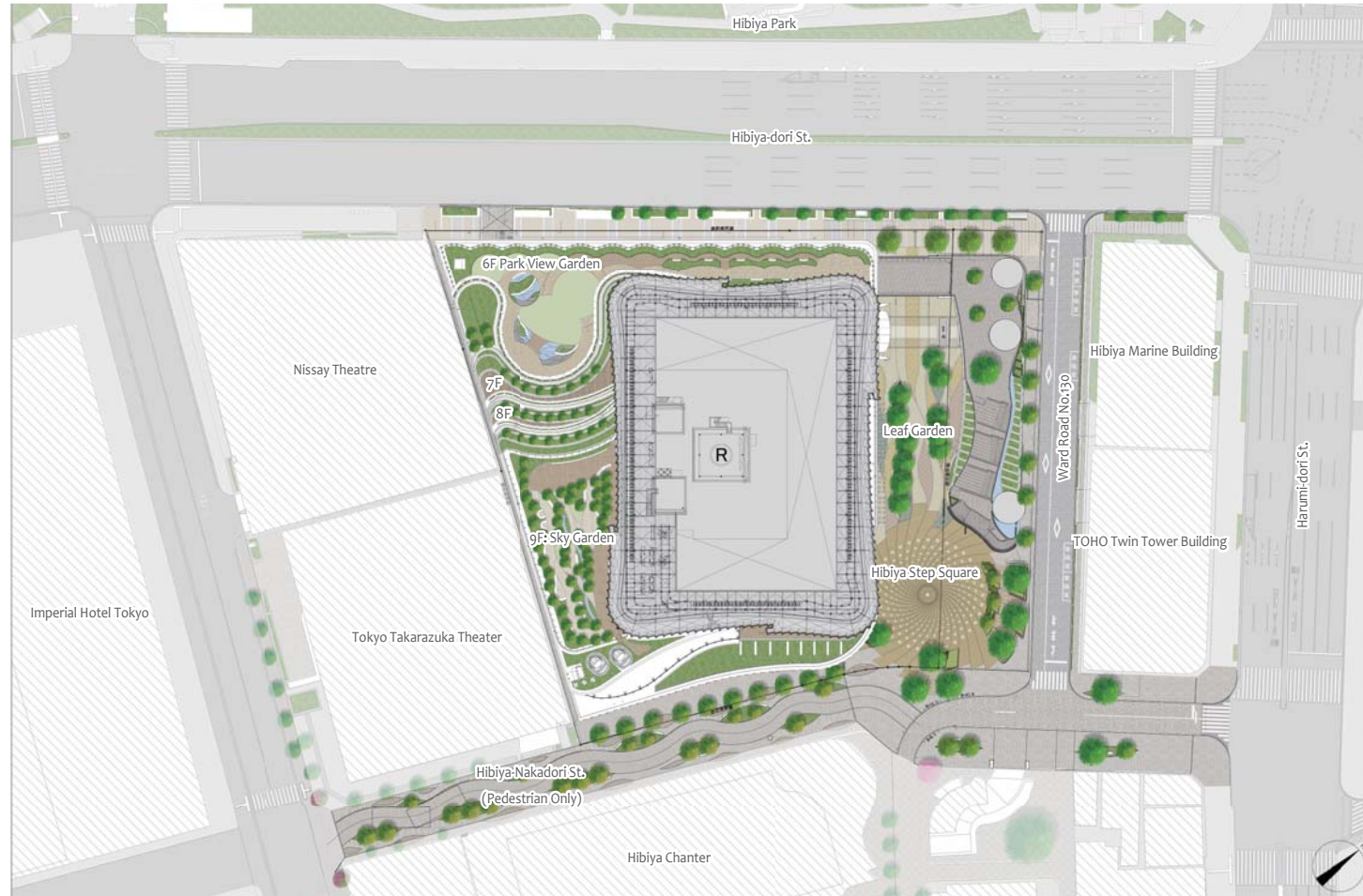
Cross Section



Enlarged Cross Section of [A]

Landscape Extending to the Greenery of Hibiya Park

To create a green hill-like landscape in the high-rise section by maintaining visual continuity and vegetation consistency, the same plant species as those of Hibiya Park were chosen upon vegetation survey while carefully taking into account the heat of afternoon sun and strong winter winds to verify and select the best anchoring method.



Overall Master Plan (Hopkins Architects+Landscape Design Inc.)

Scale 1:1600



Hibiya Step Square at Night



Leaf Garden Leaf-shaped plant beds and stone works by Masatoshi Izumi



Shrub Planted Along Curved Gutter



Hibiya-Nakadori St. (Pedestrian Only)



Curved Benches & Pavement Patterns



Hibiya Step Square, 2nd Floor Human-scale plaza at top of grand stairway



Park View Garden at Night

Landscape Extending to Takarazuka Theater and Imperial Hotel

Based on the concept of “People in the Park,” Hibiya-Nakadori St. was developed into a meandering garden path extending from tree-lined stone-paved Marunouchi-Nakadori St. and leading to Hibiya Park. This elegant pedestrian walkway with curved benches and leaf-shaped pavement is also a pleasant place to linger for a while.

Plaza & Garden – A Multi-Tiered Center of Bustling Town

Hibiya Step Square and Leaf Garden are integrated open-air space realized as a result of district road closure and city block reorganization. Hibiya Step Square serves as a bustling town center where Hibiya Festival, a district-wide theater-viewing gala, and red-carpet film promotion events are held. The Park View Garden on the 6th floor and the stretch of multi-layered plaza, generates new vibrant activities with lively people flowing into the town of cinemas and performing arts.